

WO#2000087

PRODUCT ANALYSIS



1333 Gateway Drive Suite 1023
 Melbourne FL, 32901
 321-313-5099
sales@canaverallaboratories.com

Dosage	
Sample Weight (g)	Dosage (mg)
1.24	20.8

Sample Information

Producer: Miracle Nutritional Products LLC

Sample Name: Baby Bear

Contact: Carly Zeuner
carly@miraclenp.com

Sample Type: Edible

Lab Sample ID:	S001
-----------------------	------

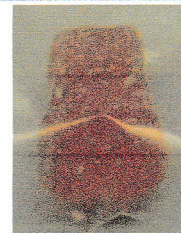
Sampling Date: 22-May-19

Sample Received: 22-May-19

Address: 4004 Shoal Line Road
 Hernando Beach, FL

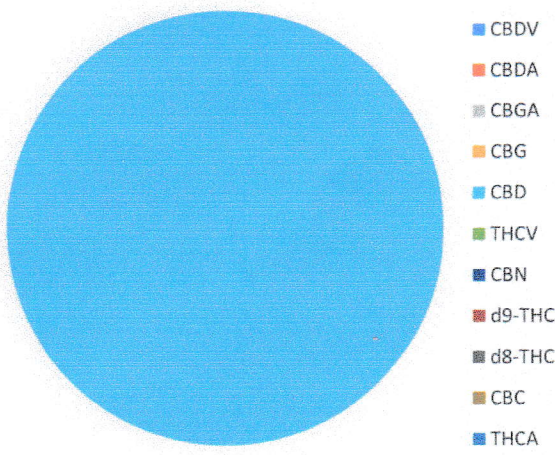
Analysis Completed: 23-May-19

Origin Lot# : BBH12019



Cannabinoid Profile

Compound	Concentration	Unit	Concentration	Unit
CBDV	Not Obs.	%	Not Obs.	mg/g
CBDA	Not Obs.	%	Not Obs.	mg/g
CBGA	Not Obs.	%	Not Obs.	mg/g
CBG	Not Obs.	%	Not Obs.	mg/g
CBD	1.67	%	16.7	mg/g
THCV	Not Obs.	%	Not Obs.	mg/g
CBN	Not Obs.	%	Not Obs.	mg/g
d9-THC	Not Obs.	%	Not Obs.	mg/g
d8-THC	Not Obs.	%	Not Obs.	mg/g
CBC	Not Obs.	%	Not Obs.	mg/g
THCA	Not Obs.	%	Not Obs.	mg/g
Total CBD	1.67	%	16.7	mg/g
Total THC	Not Obs.	%	Not Obs.	mg/g



Requested Deviations: Yes No

F
 F. Buschman, Quality Assurance

OR
 A. Riedel, Test Analyst

All results presented within in this report pertain only to the sample tested as described in the Sample Information section above. Sample was homogenized during sample preparation for analysis. Canaverall Laboratories was not involved in the statistical sampling of the production lot or batch and cannot state any association of the sample results to the production lot or batch.

This report may not be reproduced except in full, without written approval from Canaverall Laboratories LLC.

Potency - HPLC/UV

<LOQ - Below limit of quantification (below 1 ug/mL)

Trace - Trace Quantities

mg - milligram; g - gram

Not Obs. - Not observed.

Total CBD = (%CBDA * 0.877) + %CBD

Total THC = (%THCA * 0.877) + %d9-THC

PRODUCT ANALYSIS



1333 Gateway Drive Suite 1023
 Melbourne FL, 32901
 321-313-5099
sales@canaverallaboratories.com

Dosage - Total CBD

Density (g/mL)	Dosage (mg/mL)
0.925	20.1

Sample Information

Producer: Miracle Nutritional Products LLC

Sample Name: FS Tincture 500 mg

Sample Type: Tincture

Contact: Carly Zeuner

Carly@miraclenp.com

Lab Sample ID: S003

Sampling Date: 27-Aug-19

Sample Received: 23-Aug-19

Analysis Completed: 28-Aug-19

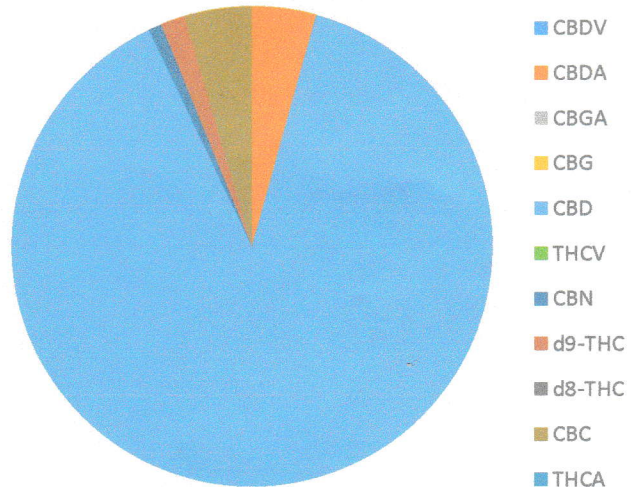
Origin Lot# : FS519225



Address: 4004 Shoal Line Road
 Hernando Beach, FL

Cannabinoid Profile

Compound	Concentration	Unit	Concentration	Unit
CBDV	< LOQ	%	< LOQ	mg/g
CBDA	0.101	%	1.01	mg/g
CBGA	Not Obs.	%	Not Obs.	mg/g
CBG	< LOQ	%	< LOQ	mg/g
CBD	2.08	%	20.8	mg/g
THCV	Not Obs.	%	Not Obs.	mg/g
CBN	0.0207	%	0.207	mg/g
d9-THC	0.0385	%	0.385	mg/g
d8-THC	Not Obs.	%	Not Obs.	mg/g
CBC	0.106	%	1.06	mg/g
THCA	Not Obs.	%	Not Obs.	mg/g
Total CBD	2.17	%	21.7	mg/g
Total THC	0.0385	%	0.385	mg/g



Requested Deviations: Yes No

Fh

AR

F. Buschman, Quality Assurance

A. Riedel, Test Analyst

All results presented within in this report pertain only to the sample tested as described in the Sample Information section above. Sample was homogenized during sample preparation for analysis. Canaveral Laboratories was not involved in the statistical sampling of the production lot or batch and cannot state any association of the sample results to the production lot or batch.

This report may not be reproduced except in full, without written approval from Canaveral Laboratories LLC.

Potency - HPLC/UV

<LOQ - Below limit of quantification

Trace - Trace Quantities

mg - milligram; g - gram

Not Obs. - Not observed.

Total CBD = (%CBDA * 0.877) + %CBD

Total THC = (%THCA * 0.877) + %d9-THC

WO#2000072 CO#1

PRODUCT ANALYSIS



1333 Gateway Drive Suite 1023
 Melbourne FL, 32901
 321-313-5099
sales@canaverallaboratories.com

Dosage	
Retail Unit Weight (g)	Dosage (mg)
113	545

Sample Information

Producer: Miracle Nutrional Products

Strain: UNK 1500 mg

Sample Type: Chiro Cream

Contact: Carly Zeuner

Carly@miraclenp.com

Lab Sample ID: S005

Sampling Date: UNK

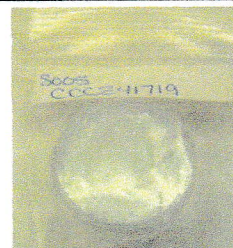
Sample Received: 22-Apr-19

Analysis Completed: 23-Apr-19

Address: 4004 Shoal Line Blvd

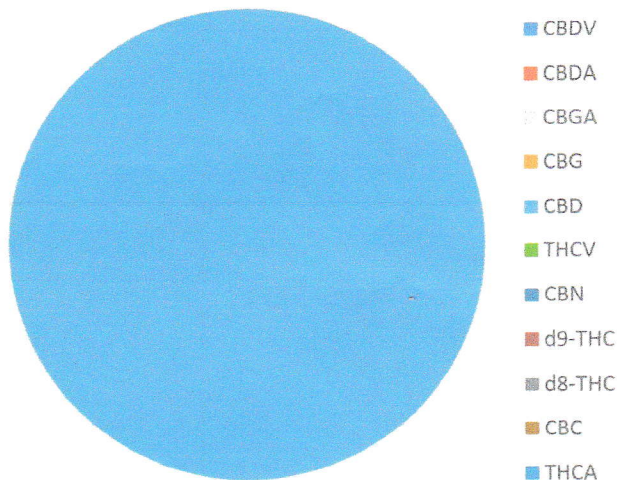
Hernando Beach FL 34607

Origin Lot#: CCCZ41919



Cannabinoid Profile

Compound	Concentration	Unit	Concentration	Unit
CBDV	Not Obs.	%	Not Obs.	mg/g
CBDA	Not Obs.	%	Not Obs.	mg/g
CBGA	Not Obs.	%	Not Obs.	mg/g
CBG	Not Obs.	%	Not Obs.	mg/g
CBD	0.482	%	4.82	mg/g
THCV	Not Obs.	%	Not Obs.	mg/g
CBN	Not Obs.	%	Not Obs.	mg/g
d9-THC	Not Obs.	%	Not Obs.	mg/g
d8-THC	Not Obs.	%	Not Obs.	mg/g
CBC	Not Obs.	%	Not Obs.	mg/g
THCA	Not Obs.	%	Not Obs.	mg/g
Total CBD	0.482	%	4.82	mg/g
Total THC	Not Obs.	%	Not Obs.	mg/g



Requested Deviations: Yes No

Approved by: [Signature] Date: 26 Apr 19

Daniel Vorisek, PhD. Technical Director

All results presented within in this report pertain only to the sample tested as described in the Sample Information section above. Sample was homogenized during sample preparation for analysis. Canaverall Laboratories was not involved in the statistical sampling of the production lot or batch and cannot state any association of the sample results to the production lot or batch.

This report may not be reproduced except in full, without written approval from Canaverall Laboratories LLC.

Potency - HPLC/UV

Trace - Trace Quantities

Not Obs. - Not observed.

<LOQ - Below limit of quantification (below 1 ug/mL)

mg - milligram; g - gram

Total CBD = (%CBDA * 0.877) + %CBD

Total THC = (%THCA * 0.877) + %d9-THC

PRODUCT ANALYSIS



1333 Gateway Drive Suite 1023
 Melbourne FL, 32901
 321-313-5099
sales@canaverallaboratories.com

Dosage

Sample Weight (g)	Dosage (mg)
1.04	18.5

Sample Information

Producer: Miracle Nutritional Product LLC

Strain: Chiro Cream ^{500mg}

Contact: Amy Mortenson
amy@miraclenp.com

Sample Type: Topical

Lab Sample ID: S020

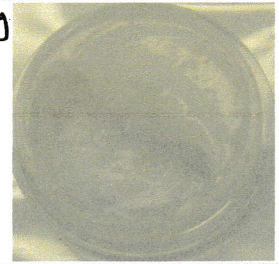
Sampling Date: 13-May-19

Sample Received: 9-May-19

Analysis Completed: 14-May-19

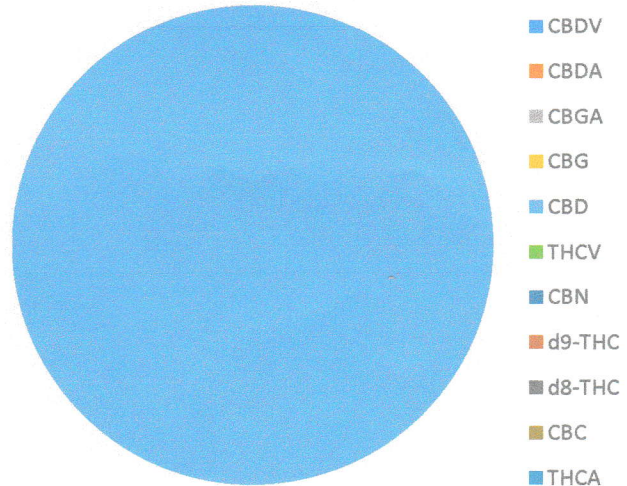
Address: 4004 Shoal Line Road
 Henando Beach, FL

Origin Lot#: CCCZ5619



Cannabinoid Profile

Compound	Concentration	Unit	Concentration	Unit
CBDV	Not Obs.	%	Not Obs.	mg/g
CBDA	Not Obs.	%	Not Obs.	mg/g
CBGA	Not Obs.	%	Not Obs.	mg/g
CBG	Not Obs.	%	Not Obs.	mg/g
CBD	1.77	%	17.7	mg/g
THCV	Not Obs.	%	Not Obs.	mg/g
CBN	Not Obs.	%	Not Obs.	mg/g
d9-THC	Not Obs.	%	Not Obs.	mg/g
d8-THC	Not Obs.	%	Not Obs.	mg/g
CBC	Not Obs.	%	Not Obs.	mg/g
THCA	Not Obs.	%	Not Obs.	mg/g
Total CBD	1.77	%	17.7	mg/g
Total THC	Not Obs.	%	Not Obs.	mg/g



Requested Deviations: Yes No

Fh

AR

F. Buschman, Quality Assurance

A. Riedel, Test Analyst

All results presented within in this report pertain only to the sample tested as described in the Sample Information section above. Sample was homogenized during sample preparation for analysis. Canaveral Laboratories was not involved in the statistical sampling of the production lot or batch and cannot state any association of the sample results to the production lot or batch.

This report may not be reproduced except in full, without written approval from Canaveral Laboratories LLC.

Potency - HPLC/UV

<LOQ - Below limit of quantification (below 1 ug/mL)

Trace - Trace Quantities

mg - milligram; g - gram

Not Obs. - Not observed.

Total CBD = (%CBDA * 0.877) + %CBD

Total THC = (%THCA * 0.877) + %d9-THC

WO#2000117

PRODUCT ANALYSIS



1333 Gateway Drive Suite 1023
Melbourne FL, 32901
321-313-5099
sales@canaverallaboratories.com

Dosage - Total CBD

Density (g/mL)	Dosage (mg/mL)
0.925	52.0

Sample Information

Producer: Miracle Nutritional Products LLC

Sample Name: FS Tincture 1500 mg

Sample Type: Tincture

Contact: Carly Zeuner

Carly@miraclenp.com

Lab Sample ID: S030

Sampling Date: 23-Aug-19

Sample Received: 21-Aug-19

Address: 4004 Shoal Line Road
Hernando Beach, FL

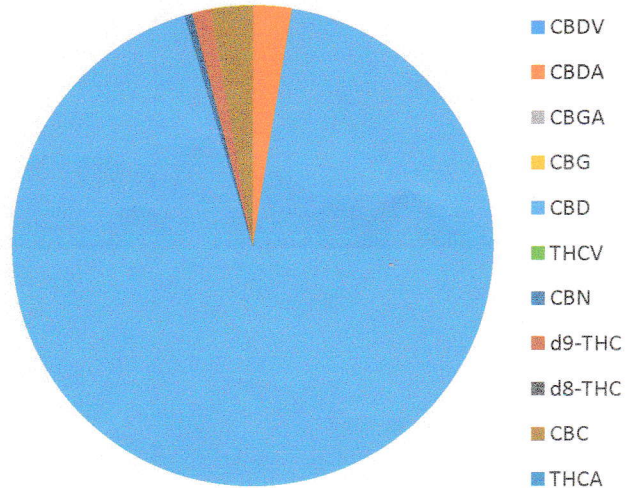
Analysis Completed: 26-Aug-19

Origin Lot#: FS119225



Cannabinoid Profile

Compound	Concentration	Unit	Concentration	Unit
CBDV	< LOQ	%	< LOQ	mg/g
CBDA	0.259	%	2.59	mg/g
CBGA	Not Obs.	%	Not Obs.	mg/g
CBG	< LOQ	%	< LOQ	mg/g
CBD	5.4	%	54	mg/g
THCV	Not Obs.	%	Not Obs.	mg/g
CBN	0.0521	%	0.521	mg/g
d9-THC	0.114	%	1.14	mg/g
d8-THC	Not Obs.	%	Not Obs.	mg/g
CBC	0.272	%	2.72	mg/g
THCA	Not Obs.	%	Not Obs.	mg/g
Total CBD	5.63	%	56.3	mg/g
Total THC	0.114	%	1.14	mg/g



Requested Deviations: Yes No

Fh

OR

F. Buschman, Quality Assurance

A. Riedel, Test Analyst

All results presented within in this report pertain only to the sample tested as described in the Sample Information section above. Sample was homogenized during sample preparation for analysis. Canaverall Laboratories was not involved in the statistical sampling of the production lot or batch and cannot state any association of the sample results to the production lot or batch.

This report may not be reproduced except in full, without written approval from Canaverall Laboratories LLC.

Potency - HPLC/UV

<LOQ - Below limit of quantification

Trace - Trace Quantities

mg - milligram; g - gram

Not Obs. - Not observed.

Total CBD = (%CBDA * 0.877) + %CBD

Total THC = (%THCA * 0.877) + %d9-THC